

SEND

上海升德

SEND

上海升德

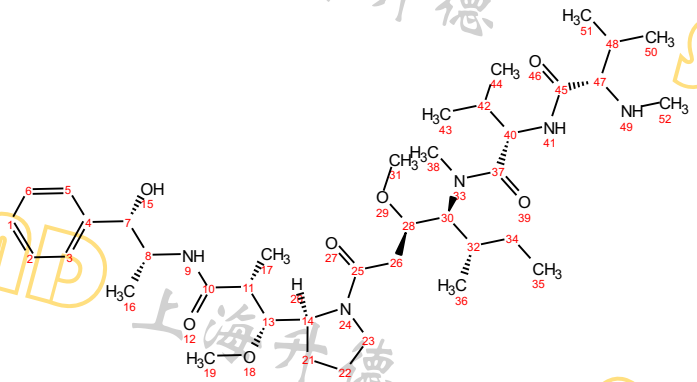
SEND

上海升德

SEND

上海升德

SEND



¹H NMR (400 MHz, DMSO-d₆) δ 8.00 (t, *J* = 9.0 Hz, 1H), 7.76 (dd, *J* = 104.8, 8.6 Hz, 1H), 7.35 – 7.22 (m, 4H), 7.19 (s, 1H), 5.45 – 5.29 (m, 1H), 4.78 – 4.53 (m, 2H), 4.52 – 4.39 (m, 1H), 4.09 – 3.87 (m, 2H), 3.82 – 3.40 (m, 2H), 3.31 (s, 1H), 3.29 – 2.92 (m, 11H), 2.66 (t, *J* = 9.5 Hz, 1H), 2.41 (d, *J* = 17.6 Hz, 1H), 2.34 – 2.25 (m, 1H), 2.15 (d, *J* = 12.5 Hz, 4H), 1.98 (dd, *J* = 26.0, 7.2 Hz, 1H), 1.85 – 1.64 (m, 4H), 1.50 (dt, *J* = 31.2, 7.8 Hz, 2H), 1.36 – 1.21 (m, 1H), 1.08 – 0.94 (m, 6H), 0.86 (q, *J* = 8.4, 7.6 Hz, 15H), 0.76 (q, *J* = 7.3 Hz, 3H).

B (dd)
7.76

A (t)
8.00

C (m)
7.30

D (s)
7.19

E (m)
5.40

F (m)
4.63

H (m)
3.65

I (t)
2.66

M (dd)
1.98

P (m)
1.28

G (m)
4.46

U (s)
3.31

J (d)
2.41

N (m)
1.75

Q (q)
1.01

L (d)
2.15

R (q)
0.86

K (m)
2.29

O (dt)
1.50

S (q)
0.76

T (m)
3.98

V (m)
3.16

15 14 13 12 11 10 9 8 7 6 5 4 3 2 1 0 -1

f1 (ppm)

0.94
1.04
3.96
0.99

0.97
1.80
0.96

1.93
2.00
1.02
1.02

1.02
0.95
0.86
3.95
1.27
4.17
1.99
1.00
6.41
15.00
3.33

SEND